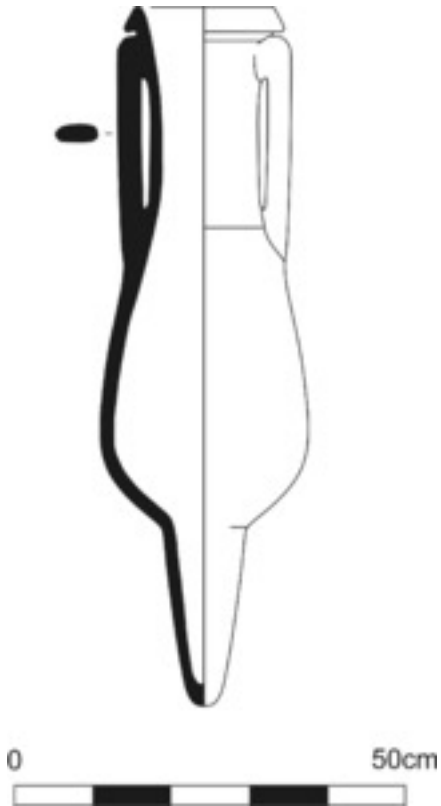


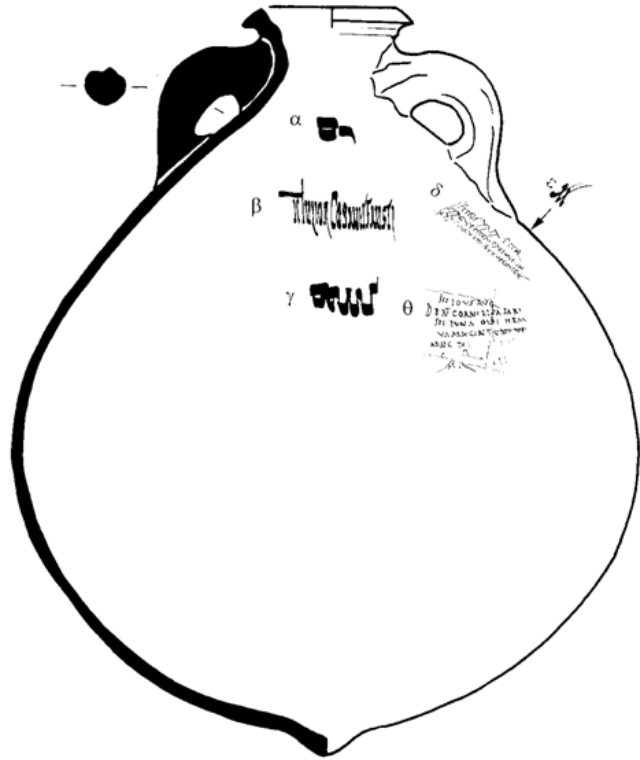
# Beltrán 2A



- Area of production: various sites in southern Spain
- Typical contents: fish-based products (mostly sauces)
  - Height: 80-110cm
  - Width: 25-40 cm
  - Capacity: Unknown
- Primary distribution: Spain, Italy, Germany, north Africa, Greece
- Dates of distribution: early 1<sup>st</sup> century CE-mid 2<sup>nd</sup> century CE
- Other features: some examples have painted labels noting the contents



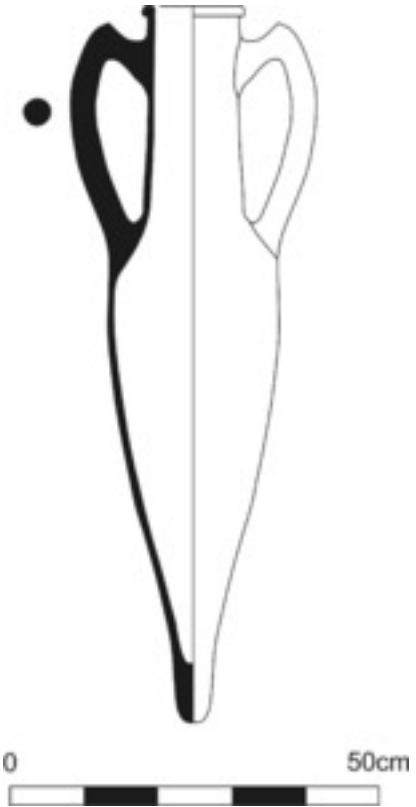
# Dressel 20



- Area of production: south central Spain
- Typical contents: olive oil
  - Height: 70-97 cm
  - Width: 56-66 cm
  - Capacity: 70-75 liters
- Primary distribution: Britain, Germany, Portugal, France, Italy, Greece, north Africa, western Asia Minor
- Dates of distribution: mid 1<sup>st</sup> century CE-late 3<sup>rd</sup> century CE
- Other features: can have painted inscriptions noting contents, distributor, origin



# Rhodian



- Area of production: Rhodes and western Asia Minor
- Typical contents: Rhodian wine (few examples of figs)
  - Height: 96-97 cm
  - Width: 23-24 cm
  - Capacity: 20-25 liters
- Primary distribution: Asia Minor, Aegean Islands, Greece, Balkans, Black Sea, Italy, France, Germany, Britain
- Dates of distribution: late 4<sup>th</sup> century BCE-1<sup>st</sup> century CE
- Other features: handles usually stamped with a small image and/or name





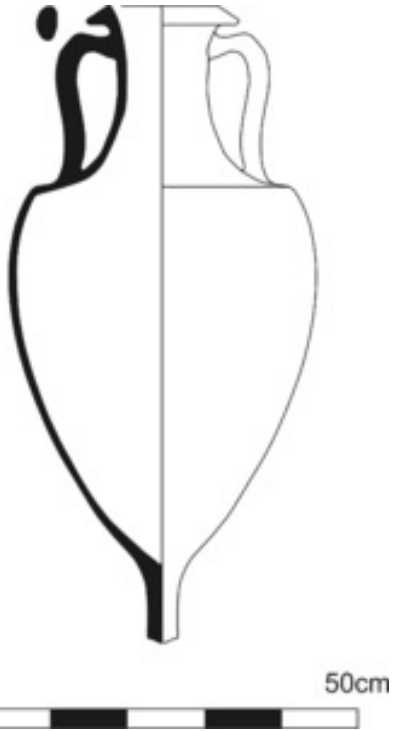
# Thasian



- Area of production: Thasos (Aegean Sea)
- Typical contents: wine
  - Height: ~50-60 cm
  - Width: ~20-25 cm
  - Capacity: 8-12 liters
- Primary distribution: Aegean Sea/Greece, western Asia Minor, Bulgaria, Romania, Black Sea
- Dates of distribution: late 5<sup>th</sup> century BCE-early 2<sup>nd</sup> century BCE
- Other features: handles can be stamped with images and/or names; clay is very red with sparkly gold inclusions



# Greco-Italic



- Area of production: Italy (central, south, and east coast), Balkans, maybe France and north Africa
- Typical contents: wine
  - Height: 82-85 cm
  - Width: 40-41 cm
  - Capacity: 20-25 liters
- Primary distribution: Italy, Sicily, southern France, Balkans, Greece
- Dates of distribution: late 4<sup>th</sup> century BCE-1<sup>st</sup> century BCE
- Other features: can have stamped handles, variety of clay types



# Stamps Answer Key

- **Dressel 20**

- Several different inscriptions in Latin– mostly illegible, importance is in that they were added at different times

- **Rhodian**

ΜΙΚΡΙΟΥ ΑΣ[ΤΥΝΟ] / Mikriou As[tyno]  
ΜΟΥΝΤΟΣ / Mountos      horse facing left  
ΠΥΘΕΩ / Pytheo

Head of the deity Helios      ΕΠΙΟΕΣ / Epioes  
ΤΟΡΟΣ / Toros

- **Thasian**

Dolphin surrounded by illegible Greek letters

ΘΑΣΙΩΝΟ[Y] / Thasionou  
wine cup and ladle  
ΝΥΜΦΩΝ / Nymphon

**Rim**



**Neck**



**Handle**



**Body**



**Bottom/Toe**

