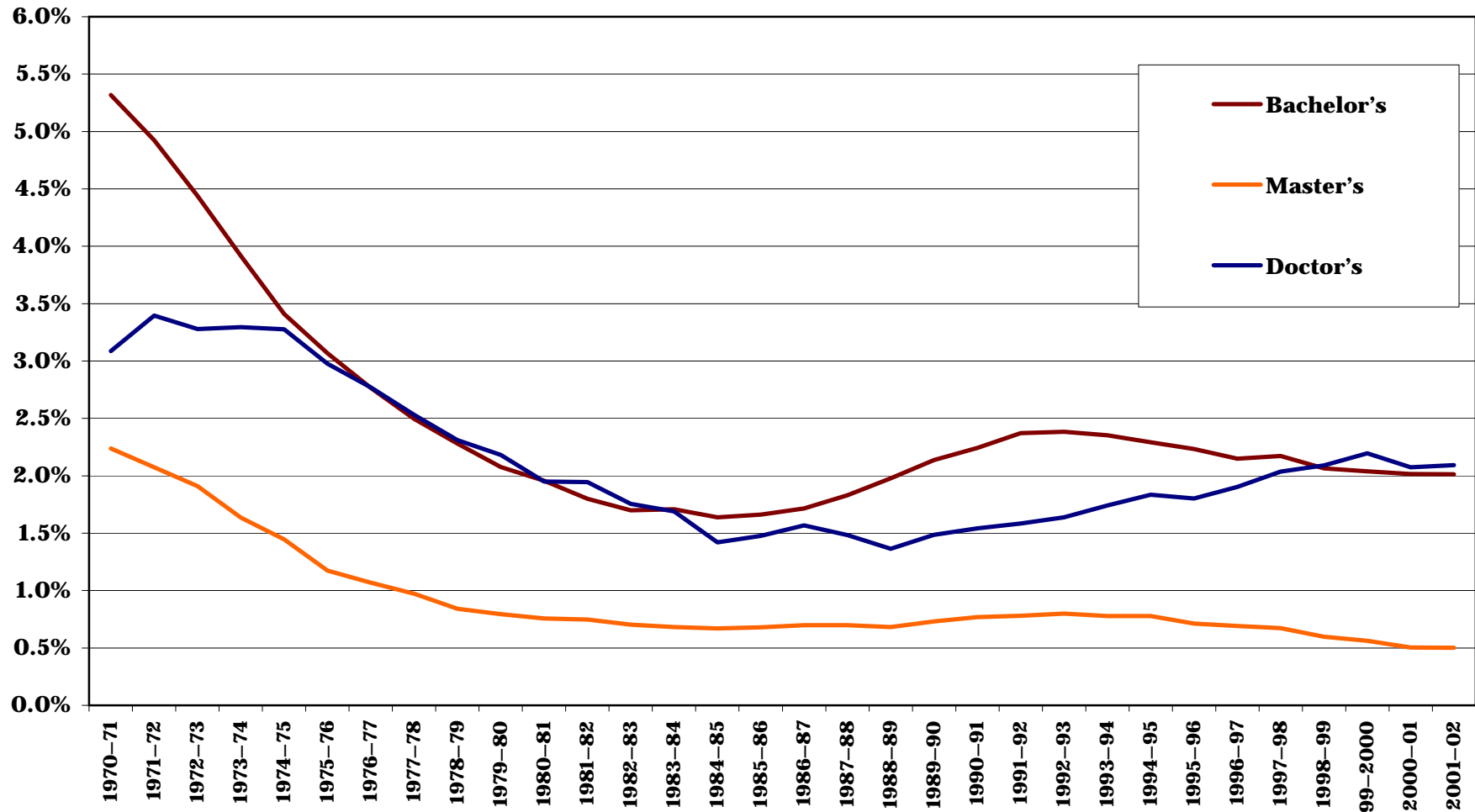


## History Degrees as a Proportion of All Degrees Conferred at Level, 1970-71 to 2001-02



**Source:** Digest of Education Statistics 2003, Tables 249 and 296 (Washington, D.C.: National Center for Education Statistics, 2004) online at [http://nces.ed.gov/programs/digest/d03/list\\_tables3.asp#c3](http://nces.ed.gov/programs/digest/d03/list_tables3.asp#c3)