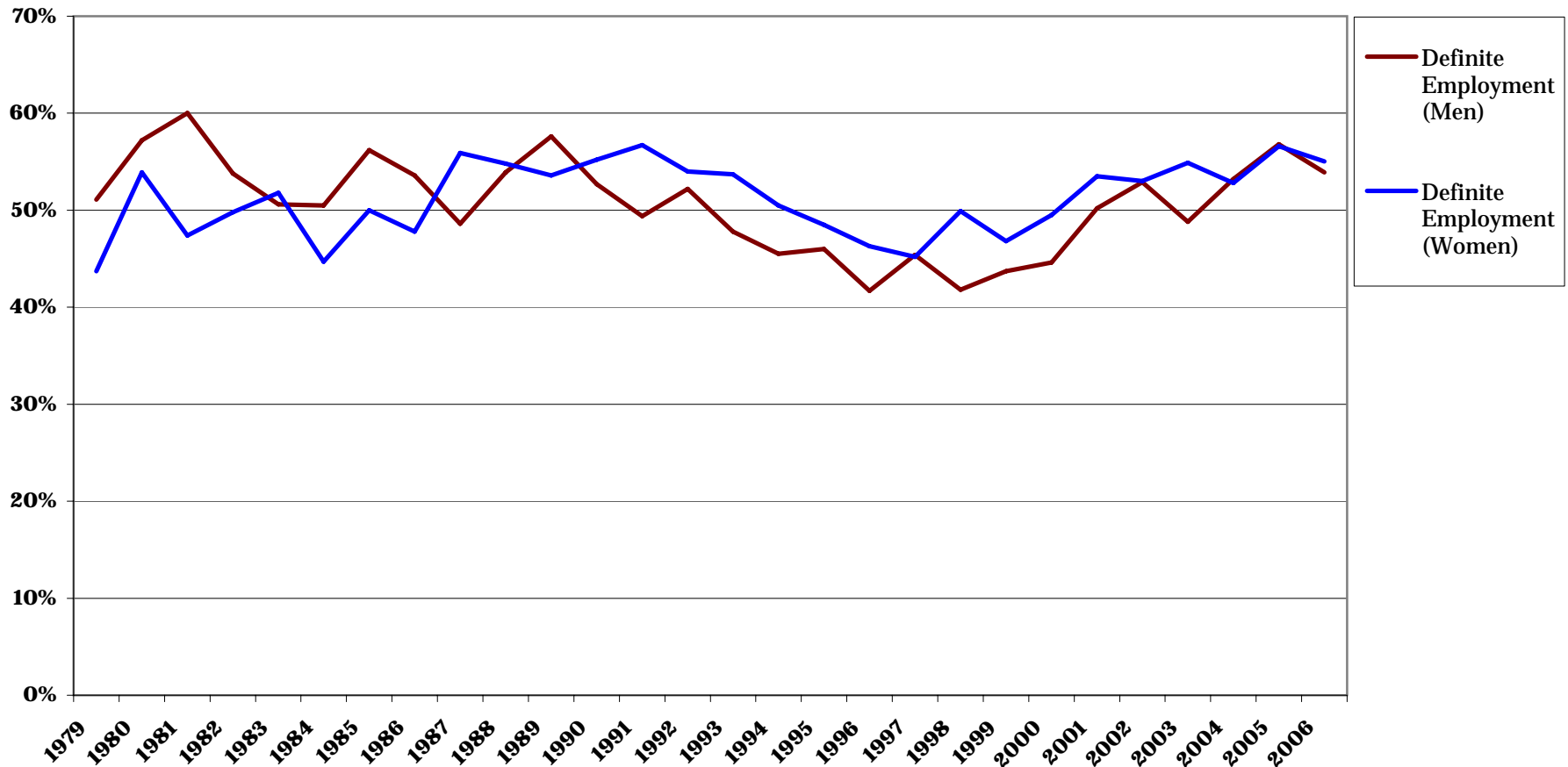


Figure 5: Reported Employment Status at Time of Degree, by Gender, 1979 to 2006



Source: Data on Ph.D. recipients from annual Summary Report: Doctorate Degrees from United States Universities. Gap between those with definite employment and still seeking was comprised of those who planned to take or seek a postdoctoral fellowship and those who were "uncertain" about their future.